

NORTH EPPING HOUSE
submission for
ASI ACT & NSW
STEEL EXCELLENCE AWARDS
2016

PROJECT TEAM

ARCHITECTS

danny broe, fahimah badrulhisham & alice pamment
at
danny broe architect

STRUCTURAL ENGINEER

michael azar at hyten engineering

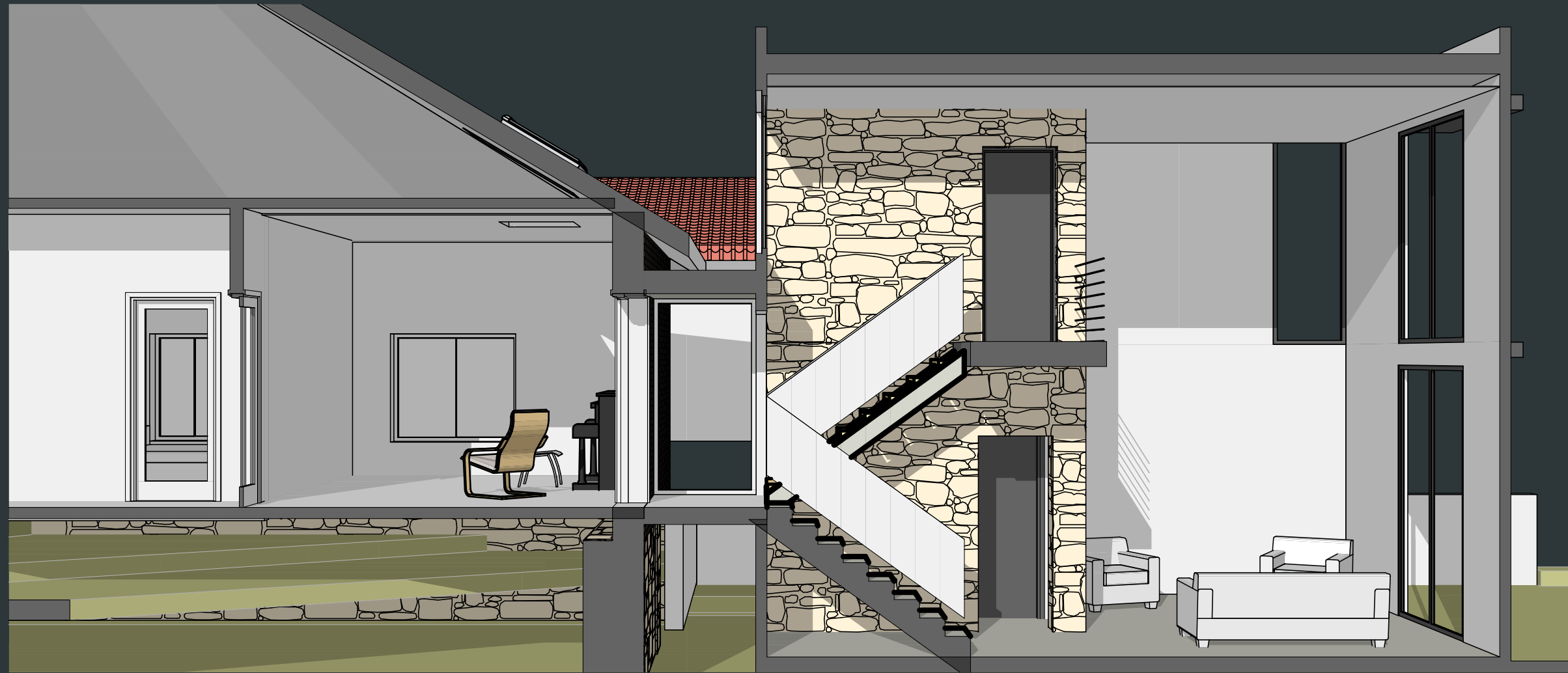
BUILDER

steve thompson & simon williams at shorebuild

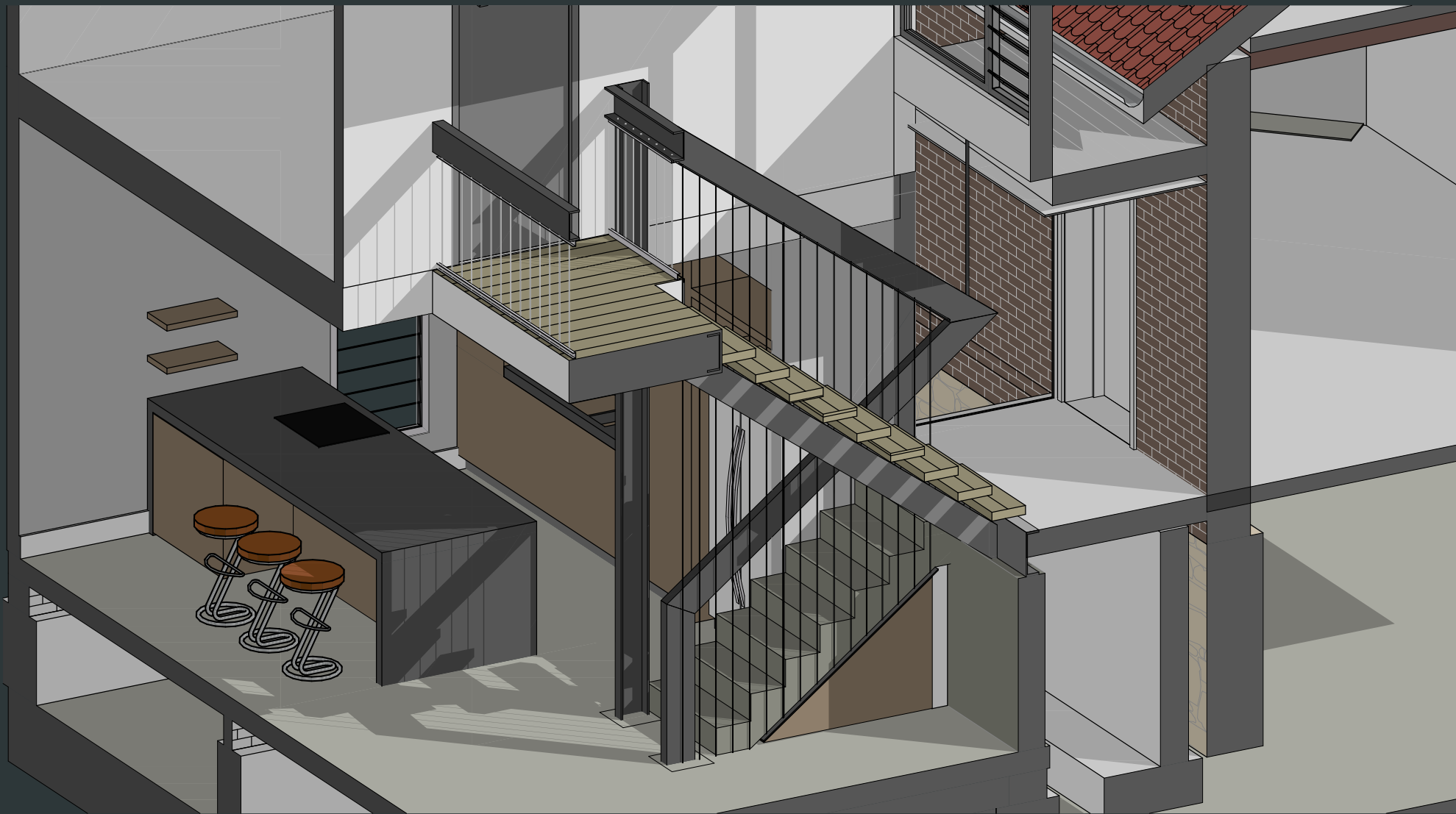
STEEL FABRICATOR

craig harding at metwork services

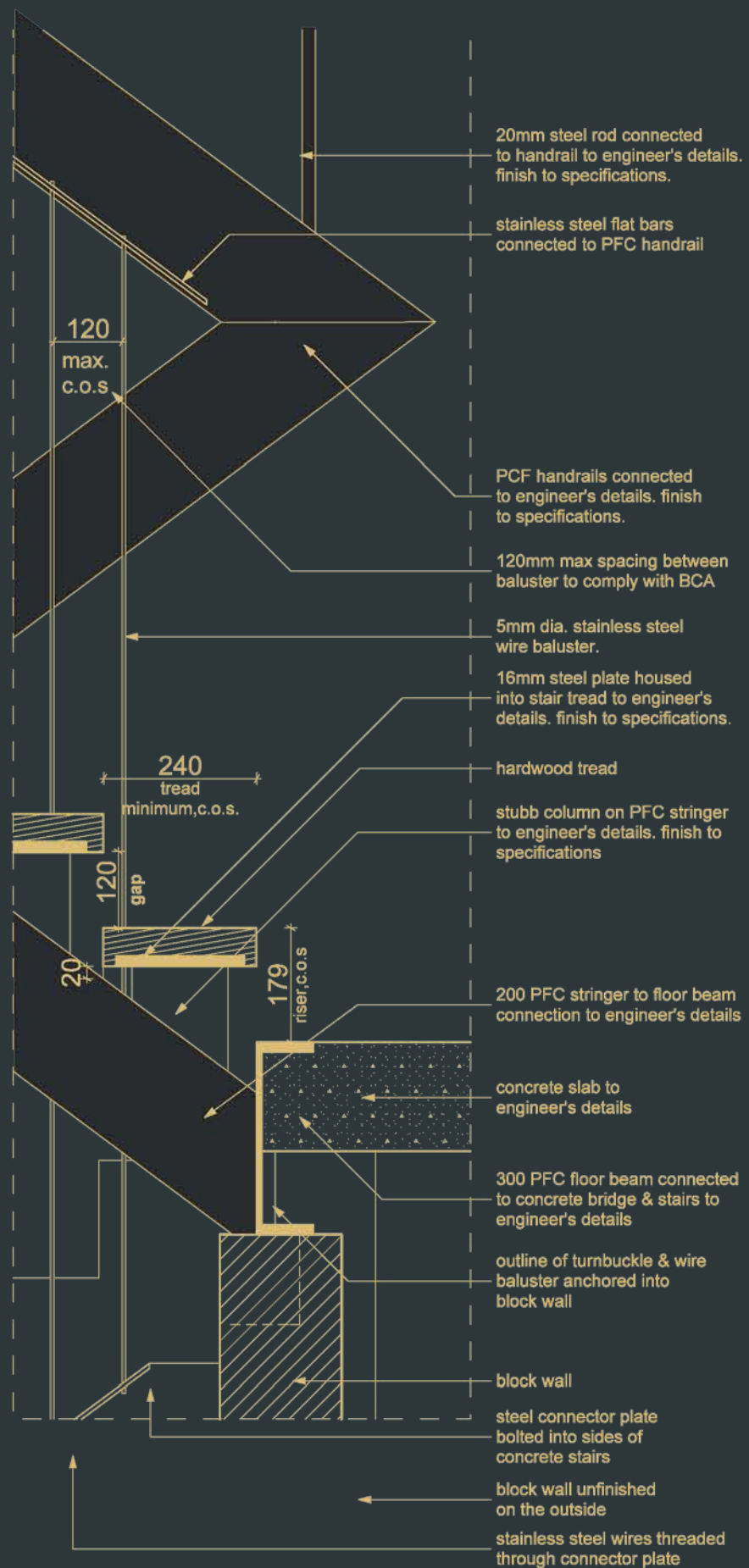
DESIGN DEVELOPMENT





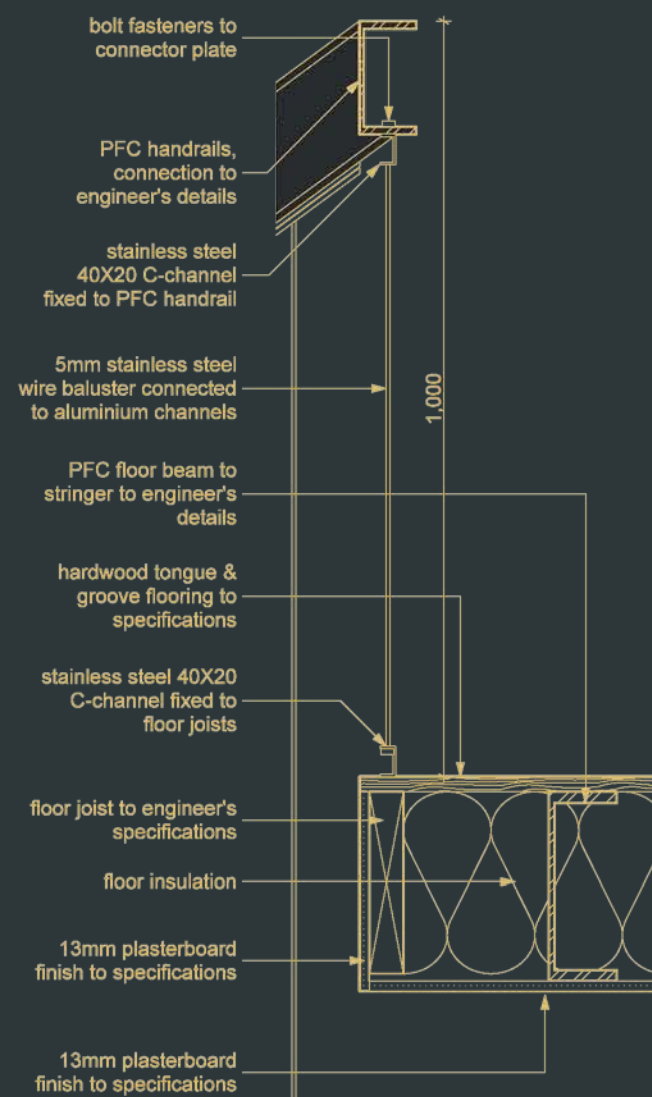


TECHNICAL DRAWINGS



Stair Details

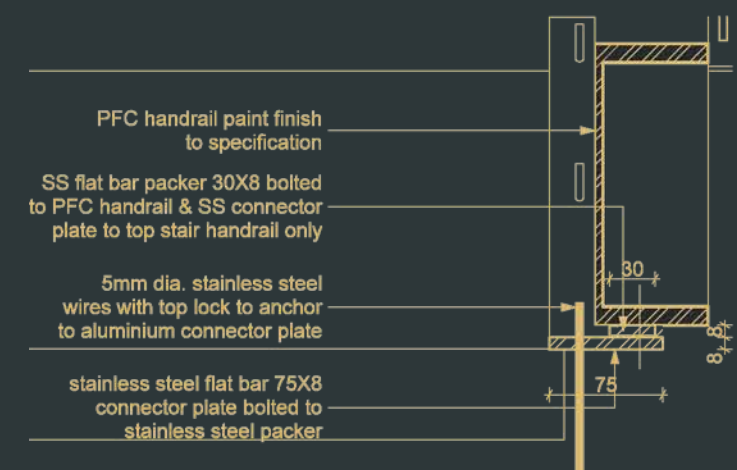
1:10



D-20

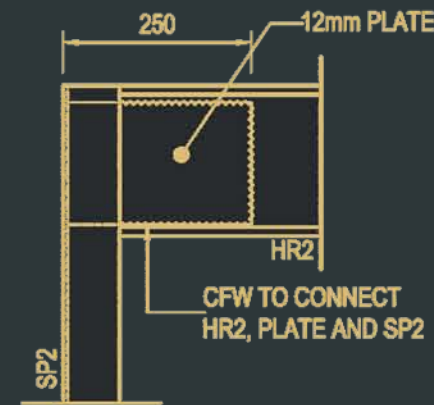
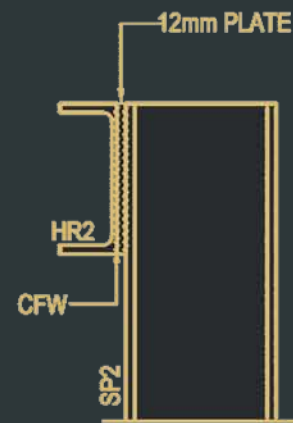
Stair Detail

1:10

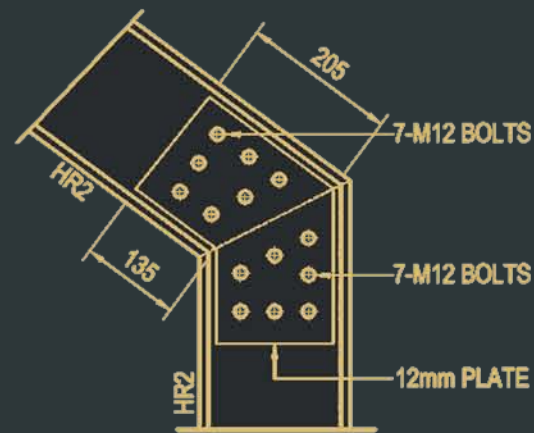


Top Handrail Detail

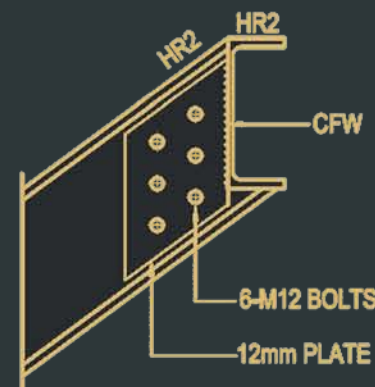
1:5



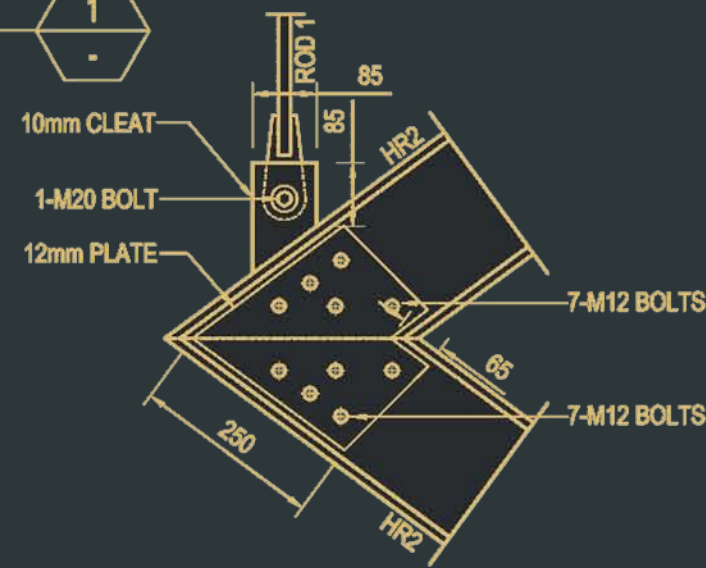
DETAIL
SCALE 1:10



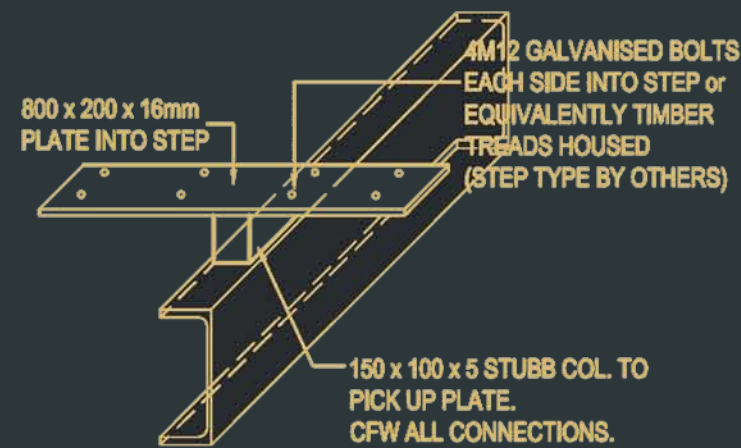
DETAIL
SCALE 1:10



DETAIL
SCALE 1:10



DETAIL
SCALE 1:10



TYPICAL STAIR TREAD DETAILS
N.T.S.

CONSTRUCTION



SHOREBUILD

DANNY
BONE

architect



SHOREBUILD

DANNY
BROE

architect



SHOREBUILD

DANNY
BROE

architect



SHOREBUILD

DANNY
BROE

architect



SHOREBUILD

DANNY
BROE

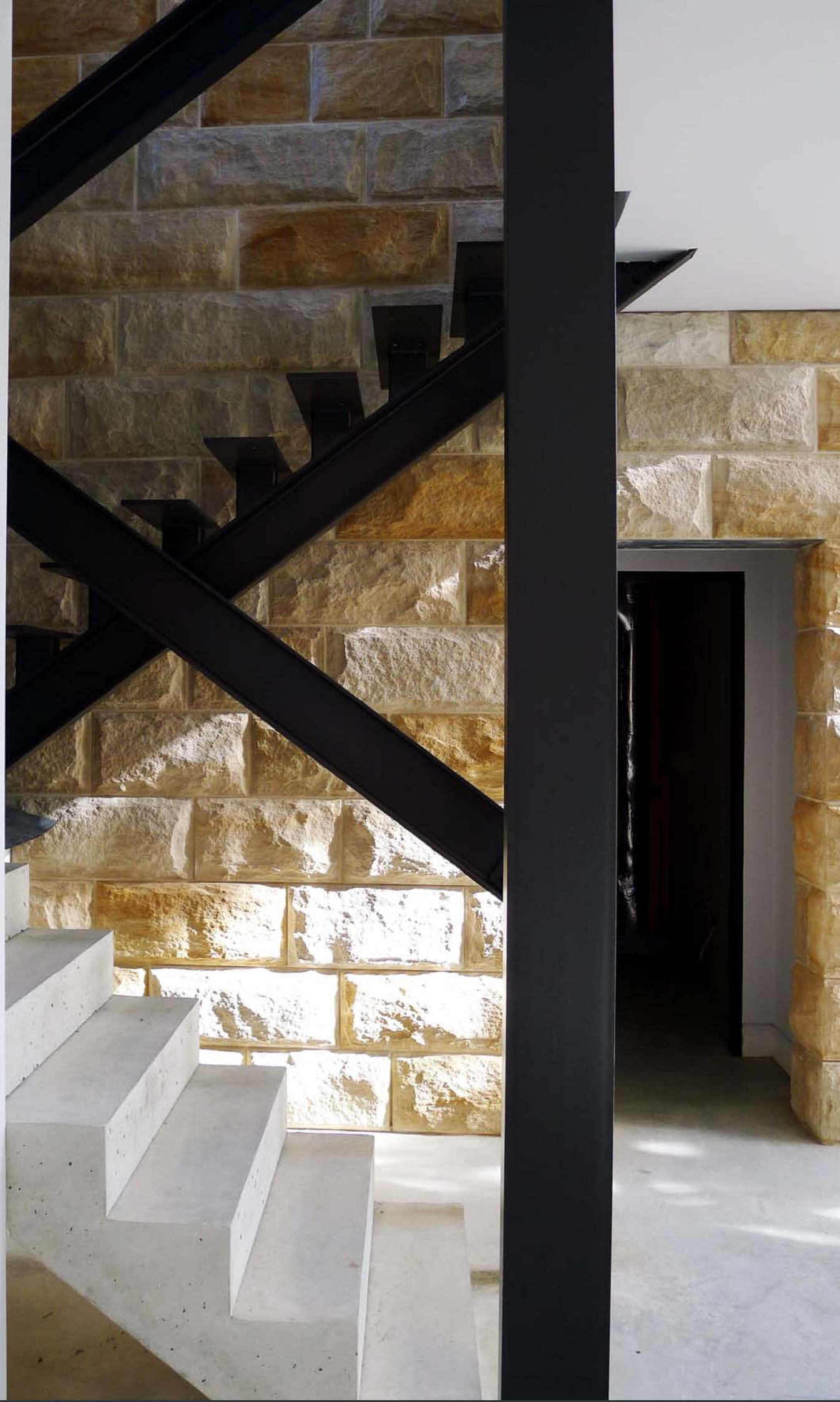
architect



SHOREBUILD

DANNY
BROE

architect



SHOREBUILD

DANNY
BROE

architect



SHOREBUILD

DANNY
BROE
architect



SHOREBUILD

DANNY
BROE

architect

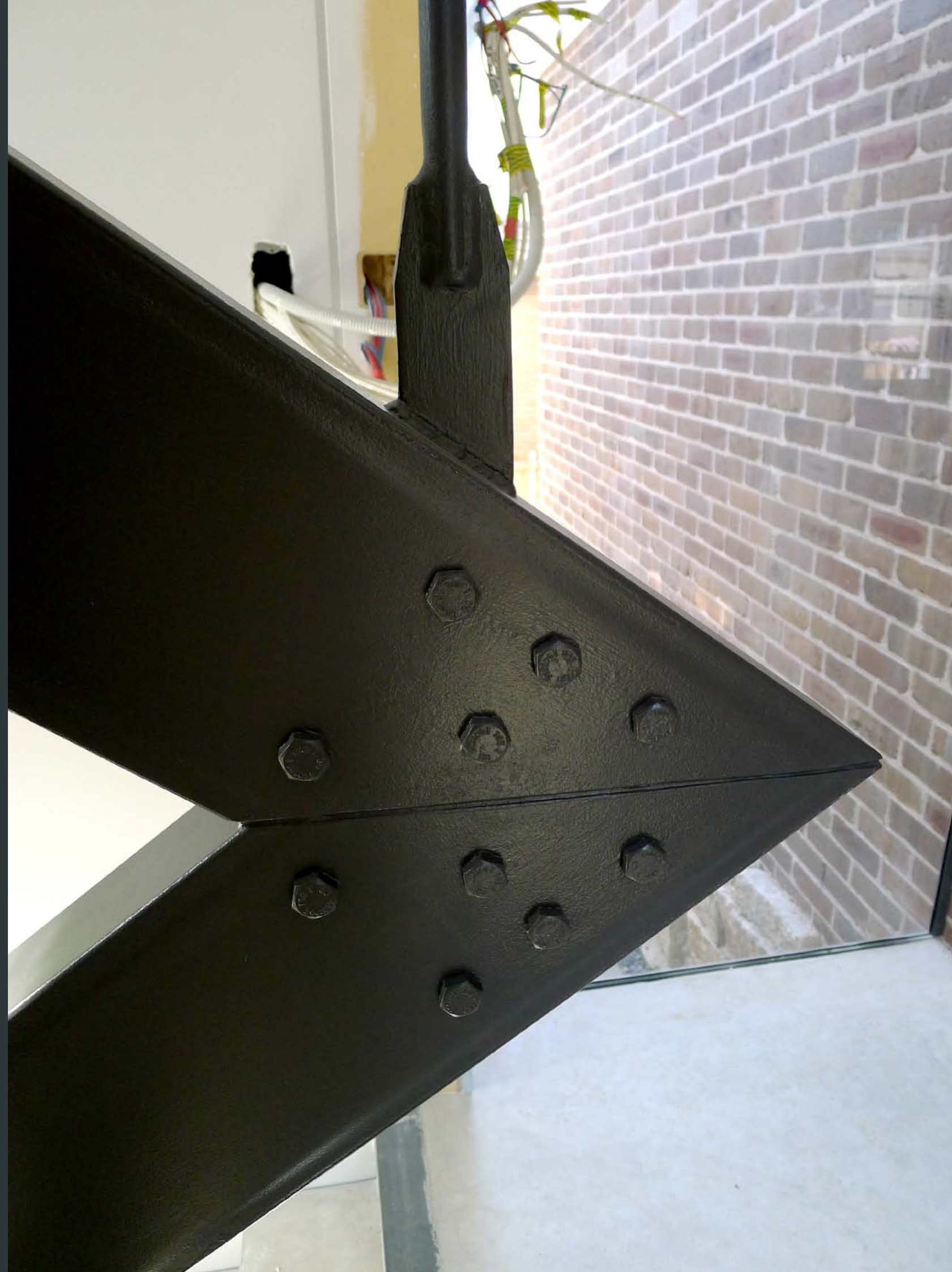


SHOREBUILD

SHOREBUILD

PROFESSIONAL

ARCHITECT



SHOREBUILD

DANNY
BROE

architect

THANK YOU